

2022-04-20

**REQUEST FOR TENDERS
SUPPLY & INSTALLATION OF NEW HANDRAIL
RFQ 24 (2022-04)
ADDENDUM #1**

This addendum shall be incorporated into, and form part of RFQ 24 (2022-04) and take precedence over all requirements of the previously issued bid documents including plans. This addendum must be signed by the bidder (signing officer) in the appropriate space and must be attached to the Form for submission by the bidder. This Addendum consists of three (3) pages and the attached documents.

1. CLOSING DATE:

Original closing date: Friday, 2022-04-22, 1200 hours (noon, local time)

Revised closing date: Wednesday, 2022-04-27, 1200 hours (noon, local time)

2. QUESTION

As per the scope of work the material should be 2" diameter, 304-grade stainless steel at a minimum. Please advise, the pipe schedule that is required for the material.

RESPONSE:

See revised drawings attached. Railing product to be used has been revised.

3. QUESTION

What is the wall thickness for the SS tubing? Recommended is 16 ga.. Sometimes 1/8" wall is used – but more expensive. Availability of either will depend on supplier at the time of ordering.

RESPONSE:

See revised drawings attached. Railing product to be used has been revised

4. QUESTION

At the TTC loop are the 20'0" sections meant to be 'kinked' in the middle to maintain the 12" off-set of post from the curb?

RESPONSE:

See revised drawings attached. Sections around the loop are now 8' long and will be straight. Sections on the straight areas will be 16' long.

5. QUESTION

Is the 12" off-set from the face or back of the curb?

RESPONSE:

See revised drawings attached. Railing to be offset 18" from the face of the curb.

6. QUESTION

Are the joints to be TIG welded and buffed to remove staining? There will be no sharp edges. Or do you want welds ground down and polished? Much more labour intensive & costly.

RESPONSE:

See revised drawings attached. Railing product has been revised and is now bonded using structural adhesive.

7. SCOPE - DELETE:

7. Handrail Installation at TTC Loop.
 - a. Install new 2" diameter, 304-grade min. stainless steel handrail of 20' length (sub-segmented into 10' long), with (3) post of 44" height, end caps on (3) posts, with a welded top and mid rail (of same material and size).
 - b. Top rail center to be 3" below the top of the post.
 - c. Mid rail center to be 20" below center of top rail.
 - d. Posts anchored into existing concrete pavement using a 5" diameter flange (post to be welded to flange) with three to four wedge anchors.
 - e. Anchors to be approved by client before installation.
 - f. All materials to be used must be anti-corrosive. Space each 20' segment by 12" o/c. The installation must be 12" from the edge of curb or edge of concrete pavement

REPLACE WITH:

7. Handrail Installation at TTC Loop.
 - a. Install new 2" diameter, 304-grade min. stainless steel handrail 42" high, with a top and mid rail (of same material and size).
 - b. Top rail at 42"
 - c. Mid rail at 22"
 - d. Sections are either 16' long with a mid-post or 8' long – see drawings.
 - e. Posts anchored into existing concrete pavement using a flange and wedge anchors.
 - f. Anchors to be approved by client before installation.
 - g. All materials to be used must be anti-corrosive. Space each railing segment by 12" o/c. The installation must be 18" from the face of curb or edge of concrete pavement

8. SCOPE - DELETE:

9. Handrail Installation at Summer Camp Drop-Off.
 - a. Install new 2" diameter, 304-grade min. stainless steel handrail of 20' length (sub-segmented into 10' long), with (3) post of 44" height, end caps on (3) posts, with a welded top and mid rail (of same material and size).
 - b. Top rail center to be 3" below the top of the post.
 - c. Mid rail center to be 20" below center of top rail.
 - d. Posts anchored into new concrete footing referred on previous point, using a 5" diameter flange (post to be welded to flange) with three to four wedge anchors.
 - e. Anchors to be approved by client before installation.
 - f. All materials to be used must be anti-corrosive. Space each 20' segment by 36" o/c. The installation must be 18" from the edge of curb.

REPLACE WITH:

9. Handrail Installation at Summer Camp Drop-Off.
 - a. Install new 2" diameter, 304-grade min. stainless steel handrail 42" high, with a top and mid rail (of same material and size).
 - b. Top rail at 42"

- c. Mid rail at 22"
- d. Sections are 16' long with a mid-post.
- e. Posts anchored into new concrete footing using a flange and wedge anchors.
- f. Anchors to be approved by client before installation.
- g. All materials to be used must be anti-corrosive. Space each railing segment by 36" o/c. The installation must be 18" from the face of curb or edge of concrete pavement

9. QUESTION

As an alternate would you accept the 20'0" sections with a radius corner (like the one in the attached picture – there would be an 3rd post in the centre of a 20'0" section)? The shop fabrication time is a little bit faster.

RESPONSE:

See revised drawings attached. Railing product has been revised.

10. REVISED DRAWINGS:

- A0.00 R1 – General Notes, Drawing List and Key Plan
- A1.01 R1 – Proposed Handrail at TTC Loop
- A1.02 R1 – Proposed Handrail at Summer Camp
- A1.03 – Deleted – Handrail Detail & Quantification
- A1.04 – Deleted – Handrail Details at Summer Camp
- A1.05 – Handrail Detail 8ft Segment @ TTC Loop – Roadside – Prefab Handrail
- A1.06 – Handrail Detail 16ft Segment @ TTC Laydown Area – Prefab Handrail
- A1.07 – Handrail Detail 16ft Segment @ Summer Camp Area – Prefab Handrail

Receipt of the Addendum shall be acknowledged as part of your submission.

The Board of Management of the Toronto Zoo reserves the right to reject any or all Tenders or to accept any quotation, should it deem such action to be in its interests.

If you have any queries regarding this matter, please contact Mr. Peter Vasilopoulos, Supervisor, Purchasing & Supply, at 416-392-5916 or by email pvasilopoulos@torontozoo.ca.

Yours truly,

Peter Vasilopoulos
Supervisor, Purchasing & Supply

I/we hereby acknowledge receipt of this addendum and make allowance in my bid.

Signed (Must be Signing Officer of Firm)

Name of Firm

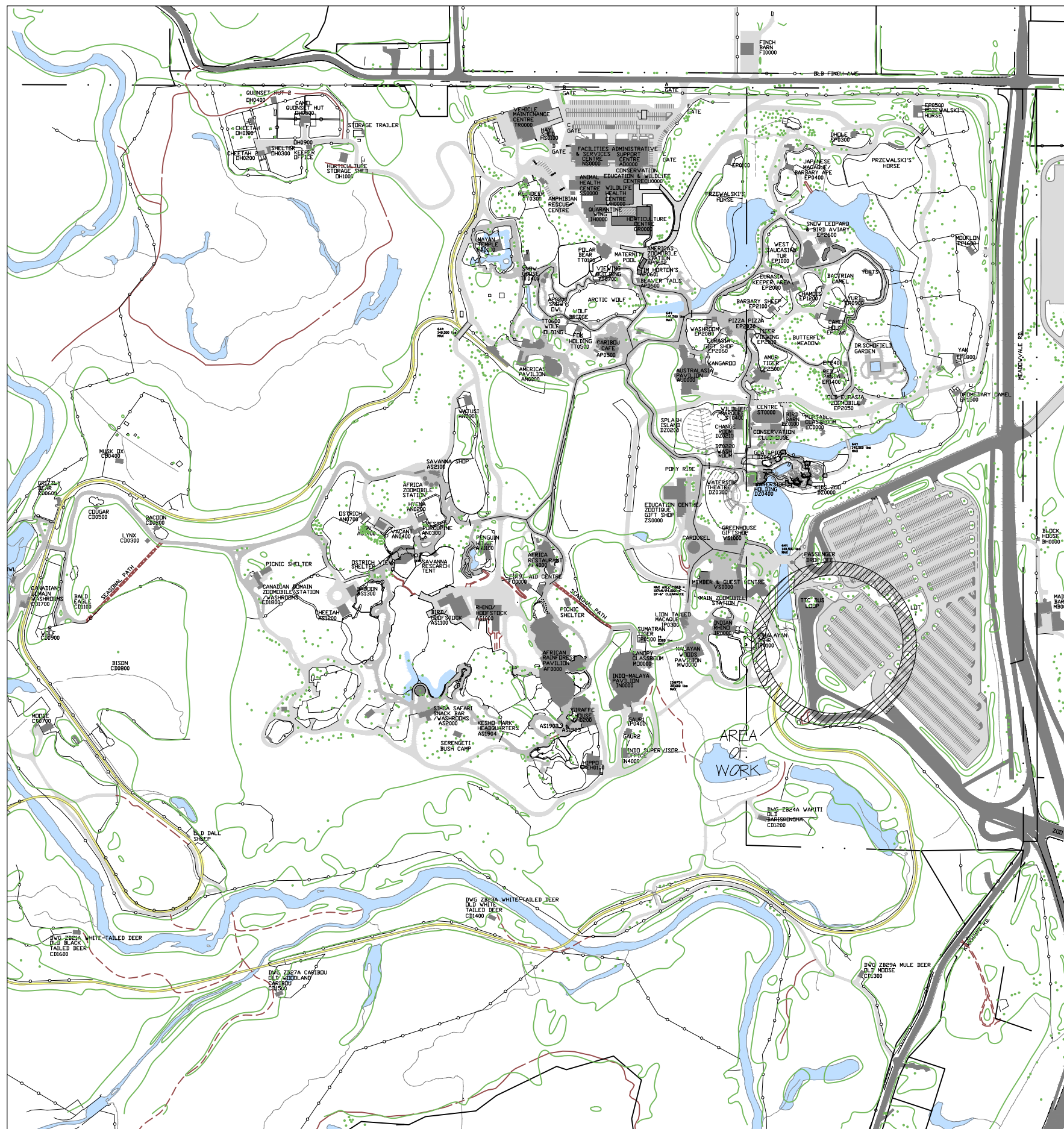
Date:

GENERAL NOTES:

1. ALL PROJECT WORK IS TO BE COMPLETED IN ACCORDANCE WITH THE MOST UP TO DATE ONTARIO BUILDING CODE (IF APPLICABLE).
2. ALL DIMENSIONS ARE TO BE VERIFIED ON SITE. DO NOT SCALE THESE DRAWINGS.
3. ANY DISCREPANCIES MUST BE BROUGHT TO THE ATTENTION OF THE TORONTO ZOO.
4. CONTRACTORS MUST ADHERE TO TORONTO ZOO POLICIES AND OH&S ACT AT ALL TIMES WHEN ON ZOO PROPERTY.
5. CONTRACTORS ARE TO CHECK IN AND OUT AT SECURITY EVERY TIME THEY ARE ENTERING OR EXITING ZOO PROPERTY.
6. ADJACENT AREAS MUST BE PROTECTED DURING SITE WORK, DELIVERY, PLACEMENT AND INSTALLATION OF THE NEW BUILDING.
7. CONTRACTORS ARE TO MAKE GOOD ANY DAMAGES INFLICTED BY THEIR WORK TO ADJACENT AREAS UPON COMPLETION OF THIS PROJECT.
8. THE CONTRACTOR IS RESPONSIBLE FOR THE SUPPLY AND INSTALLATION OF ANY MATERIALS NOT SPECIFICALLY DRAWN OR DESCRIBED BUT REASONABLY IMPLIED AND NECESSARY FOR COMPLETION OF WORK WITHOUT ADDITIONAL COSTS UNDER HIS OR HER CONTRACT.

DRAWING LIST:

△1	A0.00	GENERAL NOTES, DRAWING LIST AND KEY PLAN	NTS
△2	A1.01	PROPOSED HANDRAIL AT TTC LOOP	1/32" = 1'-0"
△3	A1.02	PROPOSED HANDRAIL AT SUMMER CAMP	1/16" = 1'-0"
△4	A1.03	HANDRAIL DETAIL & QUANTIFICATION	1:10
△5	A1.04	HANDRAIL DETAIL AT SUMMER CAMP	1:10
△6	A1.05	8' SG @ TTC LOOP -ROADSIDE-, PREFAB	1:10
△7	A1.06	16' SG @ TTC LOOP -LAYDOWN AREA-, PREFAB	1:10
△8	A1.07	8' SG @ SUMMER CAMP DROP OFF, PREFAB	1:10
9	ST1.02	SITE SERVICES	AS SHOWN



361A OLD FINCH AVE.
TORONTO, ON
M1B 5K7

NO.	DESCRIPTION	DATE
1	FOR ADDENDUM 1	2022.04.20

NO.	REVISIONS	DATE
-----	-----------	------



PEDESTRIAN SAFETY
BUS LAYDOWN
NEW HANDRAIL

REVIEWED BY
MANAGER: GREGORY CLARKSON
DATE:
CURATOR:
DATE:
APPROVED BY
COO:
DATE:

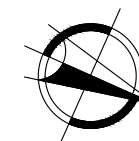
GENERAL NOTES, DRAWING
LIST & KEY PLAN

PROJECT #:
DRAWN BY: MR
CHECKED BY:
DATE: 2022-04-20
SCALE: NTS

DRAWING #:
A0.00

NO.	DESCRIPTION	DATE
1	FOR ADDENDUM 1	2022.04.20

NO.	REVISIONS	DATE
-----	-----------	------



PEDESTRIAN SAFETY
NEW HANDRAIL

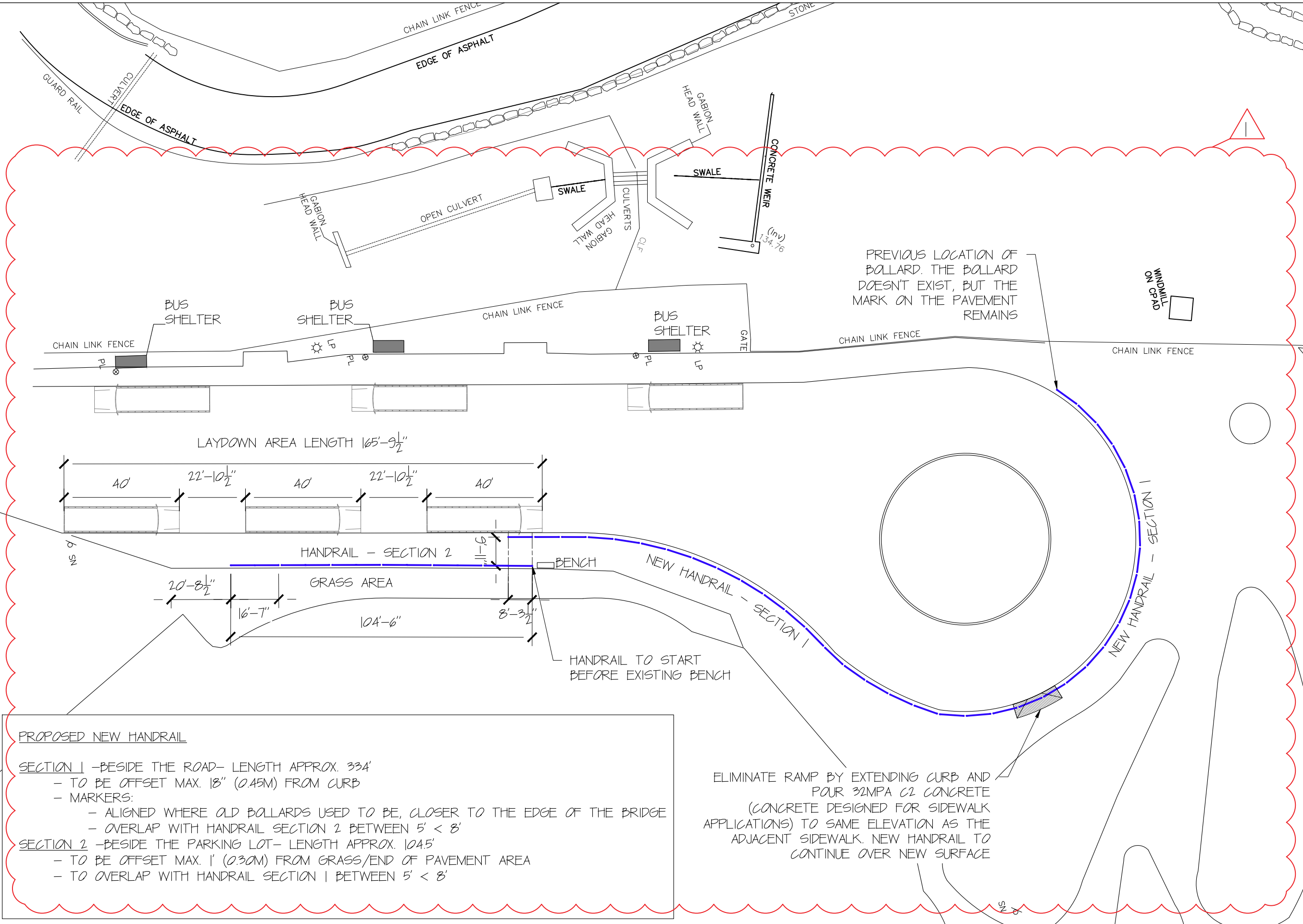
REVIEWED BY
MANAGER: GREGORY CLARKSON
DATE:
CURATOR:
DATE:
APPROVED BY
COO:
DATE:

PROPOSED HANDRAIL
AT TTC LOOP

PROJECT #:
DRAWN BY: MR
CHECKED BY:
DATE: 2022-04-20
SCALE: 1/32" = 1'-0"

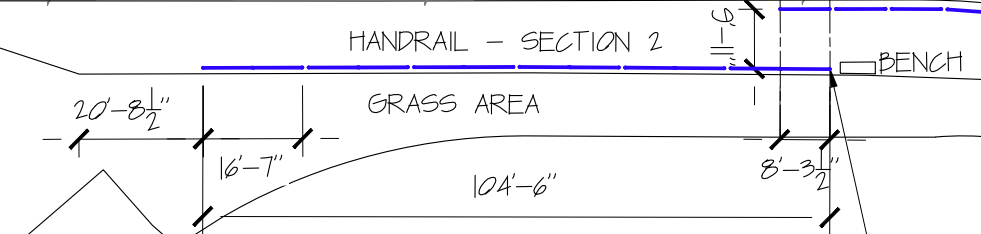
DRAWING #:

A1.01



PREVIOUS LOCATION OF
BALLARD. THE BALLARD
DOESN'T EXIST, BUT THE
MARK ON THE PAVEMENT
REMAINS

LAYDOWN AREA LENGTH 165'-9 1/2"



ELIMINATE RAMP BY EXTENDING CURB AND
POUR 32MPA C2 CONCRETE
(CONCRETE DESIGNED FOR SIDEWALK
APPLICATIONS) TO SAME ELEVATION AS THE
ADJACENT SIDEWALK. NEW HANDRAIL TO
CONTINUE OVER NEW SURFACE

PROPOSED NEW HANDRAIL

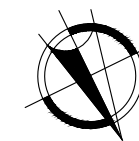
SECTION 1 - BESIDE THE ROAD - LENGTH APPROX. 334'
- TO BE OFFSET MAX. 18" (0.45M) FROM CURB
- MARKERS:
- ALIGNED WHERE OLD BALLARDS USED TO BE, CLOSER TO THE EDGE OF THE BRIDGE
- OVERLAP WITH HANDRAIL SECTION 2 BETWEEN 5' < 8'

SECTION 2 - BESIDE THE PARKING LOT - LENGTH APPROX. 104.5'
- TO BE OFFSET MAX. 1' (0.30M) FROM GRASS/END OF PAVEMENT AREA
- TO OVERLAP WITH HANDRAIL SECTION 1 BETWEEN 5' < 8'

1 PROPOSED HANDRAIL
SCALE: 1/32" = 1'-0"

NO.	DESCRIPTION	DATE
1	FOR ADDENDUM 1	2022.04.20

NO.	REVISIONS	DATE
-----	-----------	------

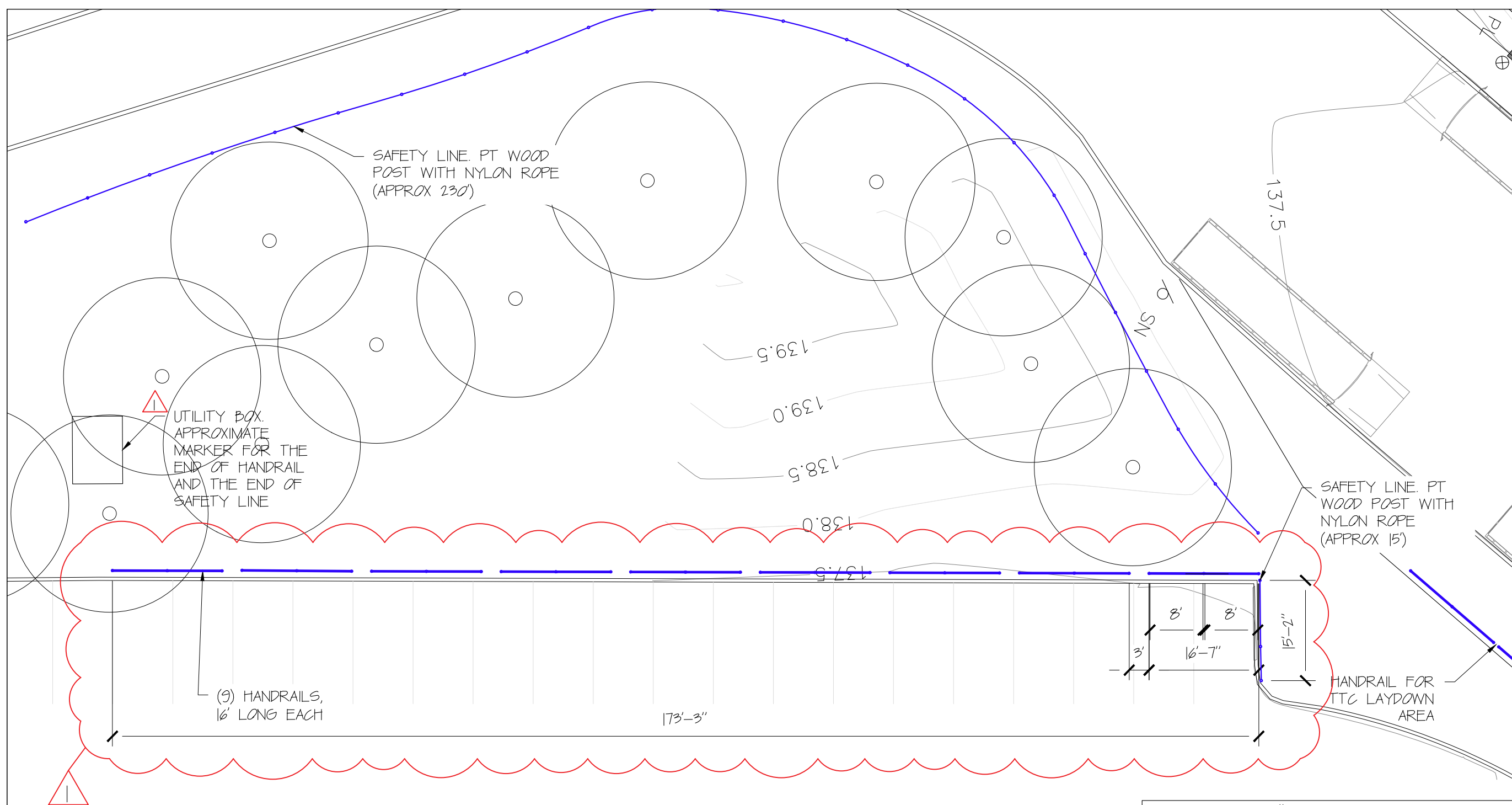

**PEDESTRIAN SAFETY
NEW HANDRAIL**

REVIEWED BY
MANAGER: GREGORY CLARKSON
DATE:
CURATOR:
DATE:
APPROVED BY
COO:
DATE:

**PROPOSED HANDRAIL
AT SUMMER CAMP DROP OFF**

PROJECT #:
DRAWN BY: MR
CHECKED BY:
DATE: 2022-04-20
SCALE: 1/16" = 1'-0"

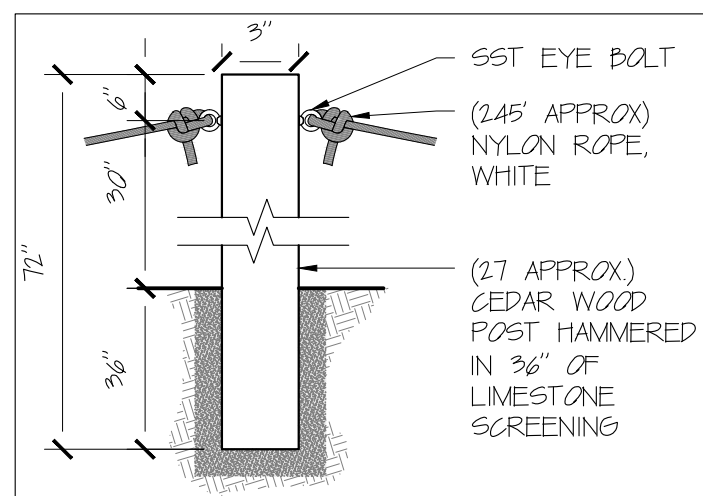
DRAWING #:
A1.02



 SAFETY LINE: 245' (APPROX)

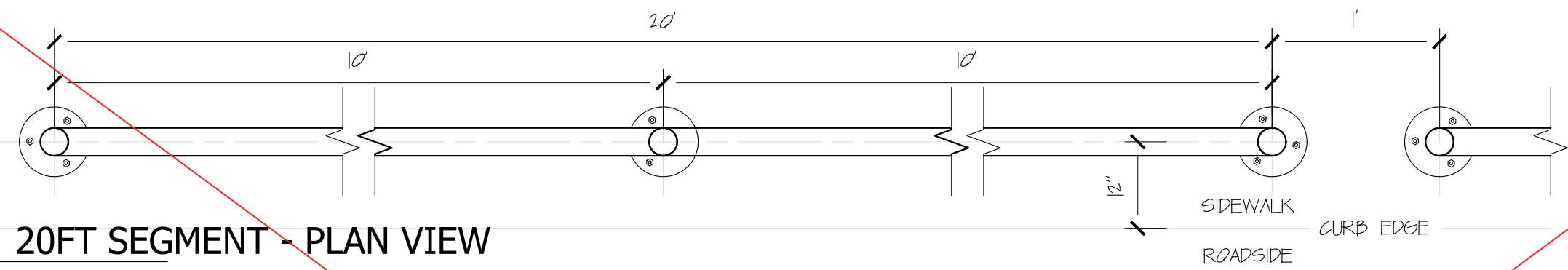
SAFETY LINE DETAILS (ON BERM)
3"ØX48" CEDAR WOOD POST, HAMMERED IN LIMESTONE SCREENING AT LEAST 3' UNDERGROUND @ 10' O/C, (2) SHOULDER PATTERN MECHANICAL EYE BOLT, STAINLESS STEEL ANCHORED ON POST W/5/8" NYLON TWISTED WHITE ROPE (OR SIMILAR) TIED AROUND EYE BOLT. SEE DETAIL 2/A1.02

 **HANDRAIL DETAILS**
16' SEGMENT MADE OUT WITH 2"Ø SST SECTION ANCHORED TO A 12"X12"X3' CONCRETE FOOTING. HANDRAIL TO HAVE 18" OFFSET FROM CURB'S EDGE. SEE DRAWING A1.05



1 PROPOSED HANDRAIL
SCALE: 1/16" = 1'-0"

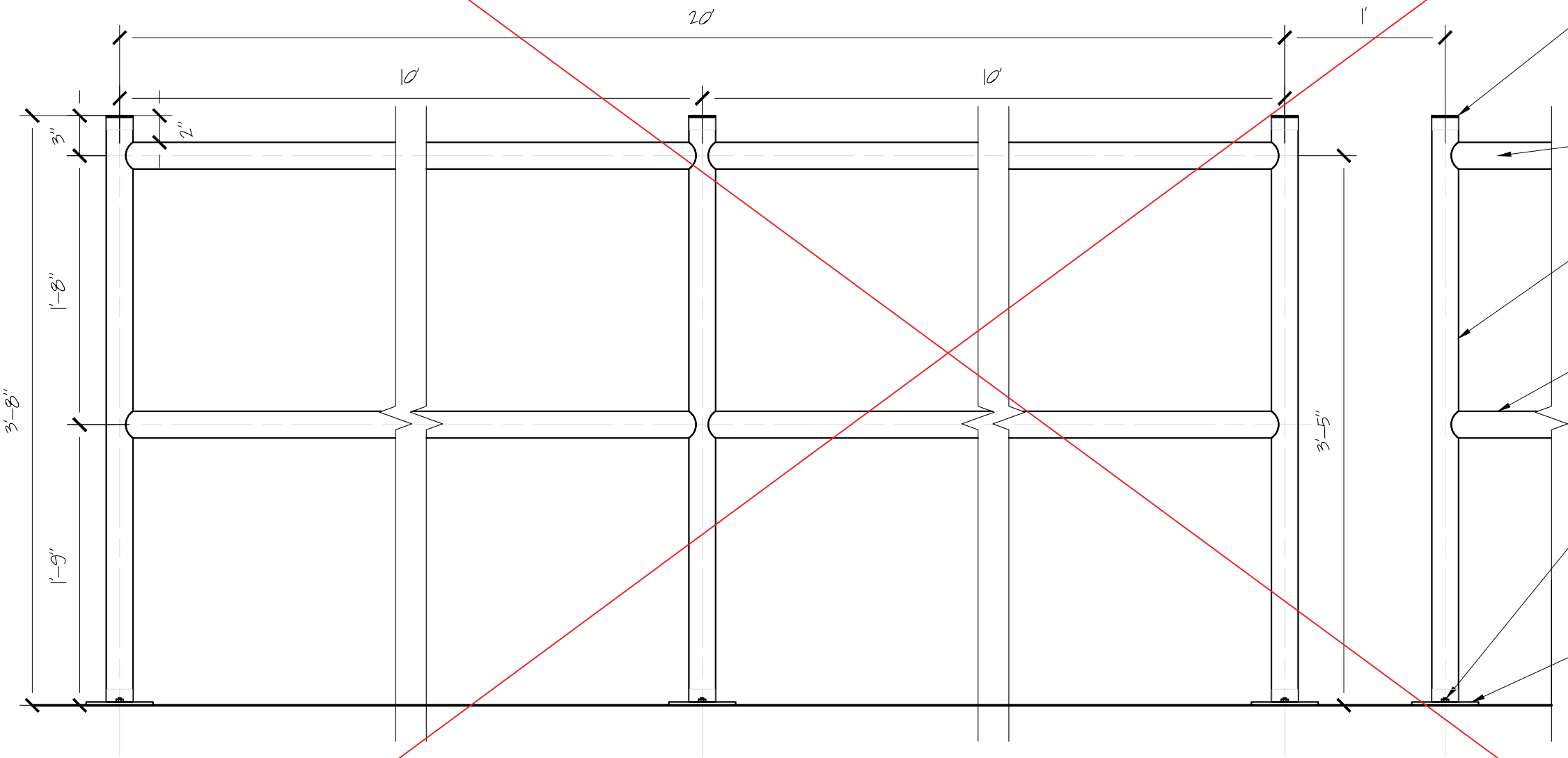
2 POST DETAIL
NTS



EACH RAIL SEGMENT IS 20' LONG (SUBSECTIONS OF 10' EACH) WITH (3) 3'-8" TALL POST ANCHORED TO (1) PLATE PER POST, (3) ANCHORS PER PLATE, (2) 10' TOP RAIL AND (2) 10' BOTTOM RAIL. POST, RAILS AND PLATES TO BE WELDED.

NOTE: ALL MATERIAL USED IN ALL COMPONENTS MUST BE ANTI-CORROSIVE.

1 20FT SEGMENT - PLAN VIEW
SCALE: 1:10



END CAP, FLUSH, SATIN STAINLESS STEEL

2" ϕ SATIN STAINLESS STEEL ROUNDED PROFILE AS TOP RAIL

2" ϕ SATIN STAINLESS STEEL ROUNDED PROFILE AS POST

2" ϕ SATIN STAINLESS STEEL ROUNDED PROFILE AS MID RAIL

SATIN STAINLESS STEEL WEDGE ANCHORS TO BE PROPOSED BY CONTRACTOR. ANCHORS TO BE APPROVED BY CLIENT

5" ϕ X 1/4" SATIN STAINLESS STEEL ANCHOR PLATE

NOTE: TO USE MIN. 304-GRADE STAINLESS STEEL

2 20FT SEGMENT - ELEVATION VIEW
SCALE: 1:10

NO.	DESCRIPTION	DATE
1	FOR ADDENDUM 1	2022.04.20

NO.	REVISIONS	DATE
-----	-----------	------

**PEDESTRIAN SAFETY
BUS LAYDOWN
NEW HANDRAIL**

REVIEWED BY
MANAGER: GREGORY CLARKSON
DATE:
CURATOR:
DATE:
APPROVED BY
COO:
DATE:

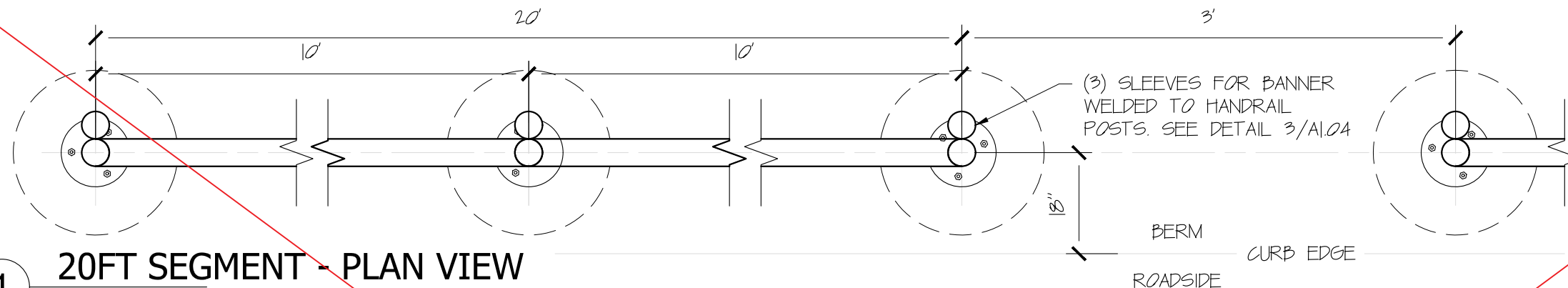
**HANDRAIL DETAIL
& QUANTIFICATION**

HANDRAIL SECTION	LENGTH	20' SEGMENT	QTY OF POST (3 PER SEGMENT)	QTY OF PLATES (3 PER SEGMENT)	QTY OF ANCHORS (9 PER SEGMENT)	QTY OF TOP RAIL (1) 20' PER SEG.	QTY OF MID RAIL (1) 20' PER SEG.	SLEEVES (3) 2' PER SEG.
HANDRAIL SECTION 1	335'	16	48	48	144	16	16	
HANDRAIL SECTION 2	104'	5	15	15	45	5	5	
HANDRAIL S CAMP	158'	7	21	21	63	7	7	21
TOTAL	597'	28	84	84	252	28	28	21

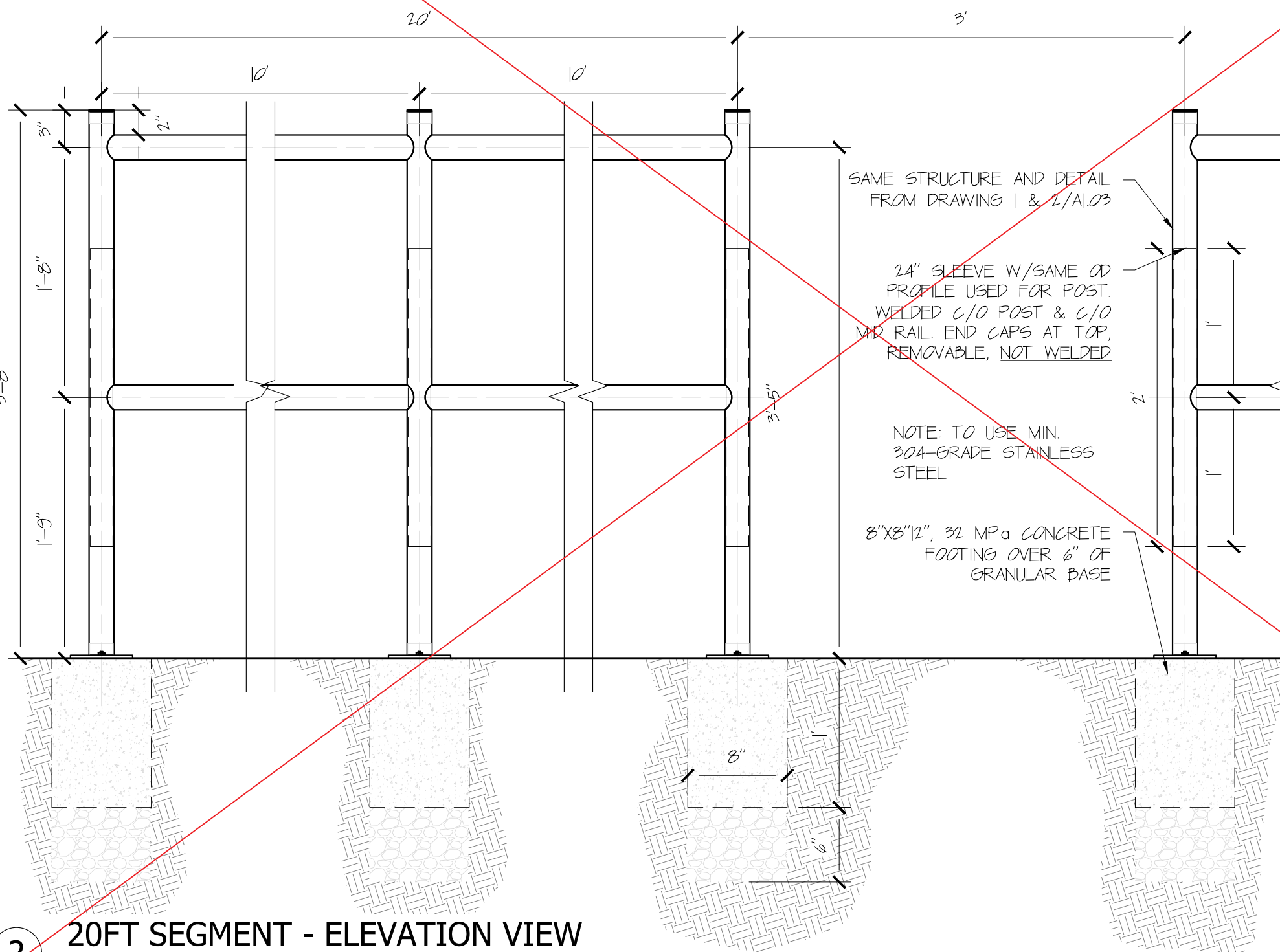
PROJECT #:
DRAWN BY: MR
CHECKED BY:
DATE: 2022-04-20
SCALE: 1:10
DRAWING #:

EACH RAIL SEGMENT IS 20' LONG (SUBSECTIONS OF 10' EACH) WITH (3) 3'-8" TALL POST ANCHORED TO (1) PLATE PER POST, (3) ANCHORS PER PLATE, (2) 10' TOP RAIL AND (2) 10' BOTTOM RAIL. POST, RAILS AND PLATES TO BE WELDED.

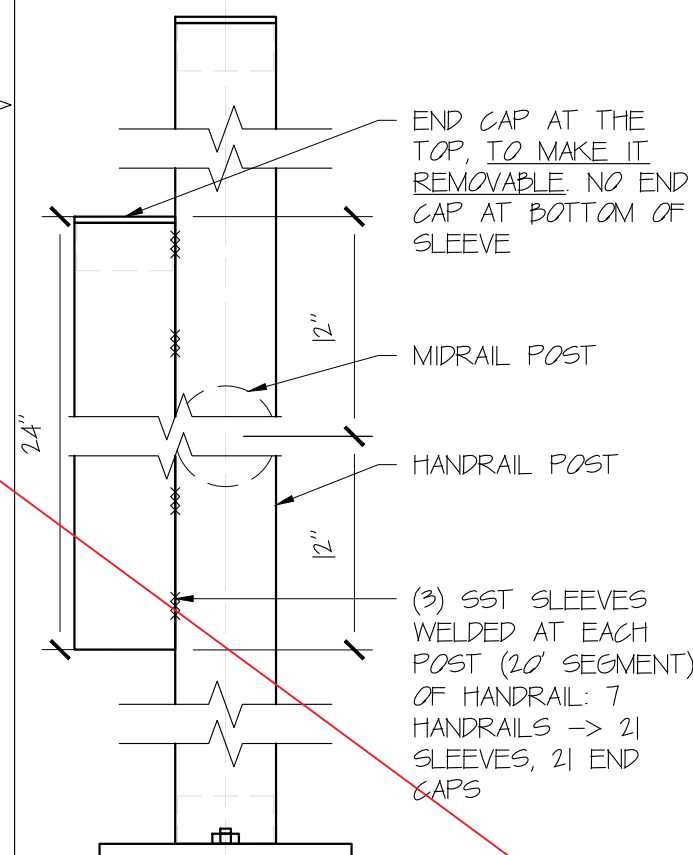
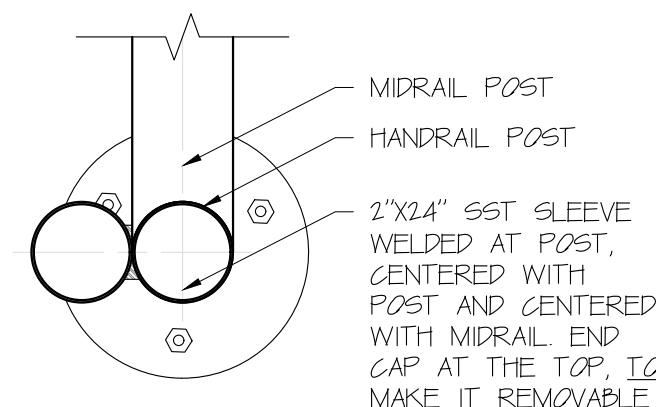
NOTE: ALL MATERIAL USED IN ALL COMPONENTS MUST BE ANTI-CORROSIVE.


1 20FT SEGMENT - PLAN VIEW

SCALE: 1:10


2 20FT SEGMENT - ELEVATION VIEW

SCALE: 1:10


3 SLEEVE DETAIL

SCALE: NTS

NO.	DESCRIPTION	DATE
1	FOR ADDENDUM 1	2022.04.20

NO.	REVISIONS	DATE
-----	-----------	------

**PEDESTRIAN SAFETY
BUS LAYDOWN
NEW HANDRAIL**

REVIEWED BY
MANAGER: GREGORY CLARKSON
DATE:
CURATOR:
DATE:
APPROVED BY
COO:
DATE:

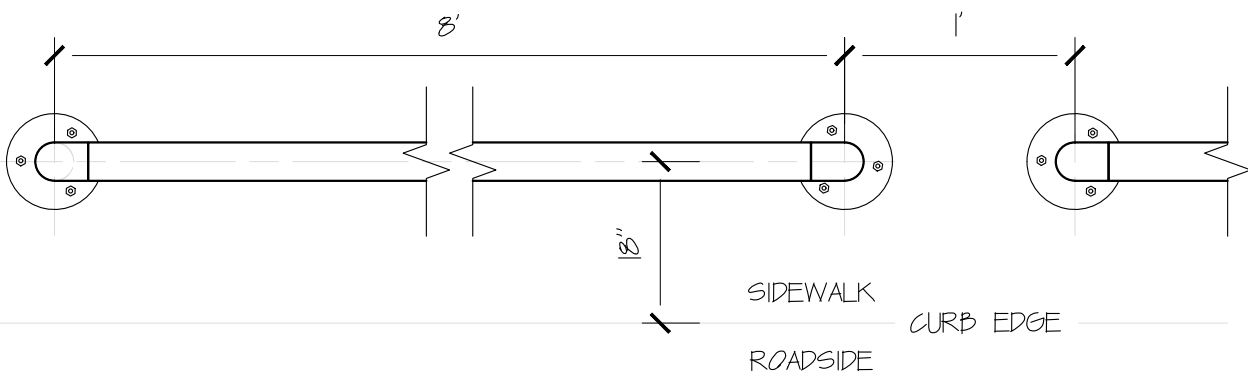
**HANDRAIL DETAIL
AT SUMMER CAMP
DROP-OFF**

PROJECT #:
DRAWN BY: MR
CHECKED BY:
DATE: 2022-04-20
SCALE: 1:10
DRAWING #:

A1.04

EACH RAIL SEGMENT IS 8' LONG WITH (2) 42" TALL END POST ANCHORED TO (1) PLATE PER POST, (3 OR 4) ANCHORS PER PLATE, (1) 8' TOP RAIL AND (1) 8' MID RAIL. END POSTS AND CONNECTORS ARE PREFAB BY MANUFACTURER. RAILS TO BE GLUED TO END POSTS FOLLOWING MANUFACTURE'S INSTRUCTIONS.

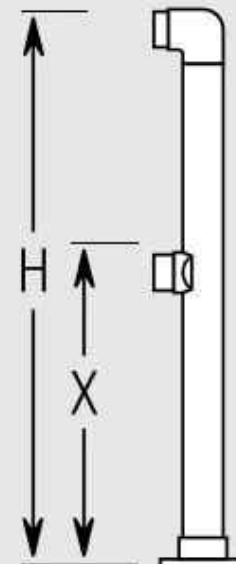
NOTE: ALL MATERIAL USED IN ALL COMPONENTS MUST BE ANTI-CORROSIVE.



End Post

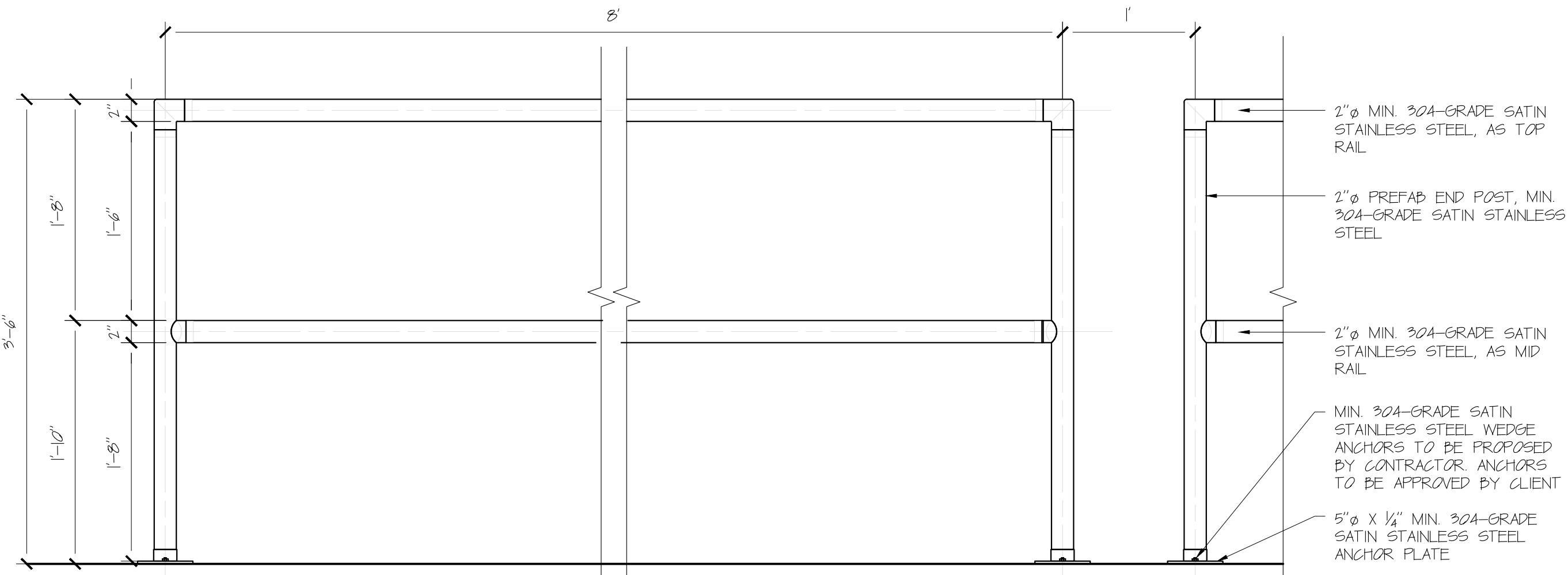


X Height:
 36" Post = 19"
 42" Post = 22"



Item#	Tubing	Height
D132/3	1 1/2"	36"
D232/3	2"	36"
D232/4	2"	42"

NOTE: PREFAB HANDRAIL COMPONENTS SOURCED FROM LAVI INDUSTRIES OR APPROVED EQUIVALENT



1 8FT SEGMENT - PLAN VIEW & ELEVATION
 SCALE: 1:10



**361A OLD FINCH AVE.
 TORONTO, ON
 M1B 5K7**

NO.	DESCRIPTION	DATE

NO.	REVISIONS	DATE

PEDESTRIAN SAFETY BUS LAYDOWN & SUMMER CAMP NEW HANDRAIL

REVIEWED BY
 MANAGER: GREGORY CLARKSON
 DATE:
 CURATOR:
 DATE:
 APPROVED BY
 COO:
 DATE:

HANDRAIL DETAIL 8FT SEGMENT @ TTC LOOP -ROADSIDE- PREFAB HANDRAIL

PROJECT #:
 DRAWN BY: MR
 CHECKED BY:
 DATE: 2022-04-20
 SCALE: 1:10

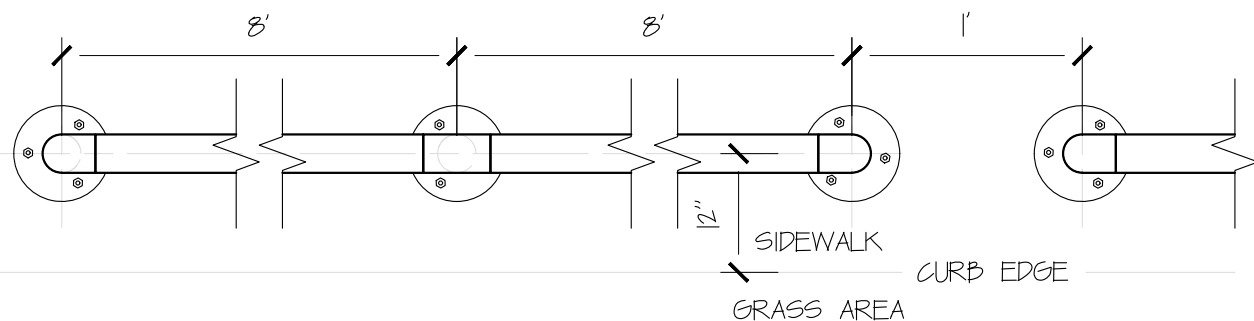
DRAWING #:
A1.05

42" HEIGHT, PREFAB POST - RAILS GLUED

HANDRAIL SECTION	LENGTH	8' SEGMENT	QTY END POST (2 PER SEGMENT)	QTY CENTER POST (1 PER SEGMENT)	QTY OF PLATES (1 PER POST)	QTY OF ANCHORS (4 PER PLATE)	QTY OF RAILS (2) 8' PER SEG.	SLEEVES (3) 2' PER SEG.
HANDRAIL SECTION I	334'	36	72	N/A	72	288	72	N/A

EACH RAIL SEGMENT IS 16' LONG (SUB-SEGMENTS OF 8' EACH) WITH (2) 42" TALL END POST, (1) 42" TALL CENTER POST, ANCHORED TO (1) PLATE PER POST, (3 OR 4) ANCHORS PER PLATE, (2) 8' TOP RAIL AND (2) 8' MID RAIL. POSTS AND CONNECTORS ARE PREFAB BY MANUFACTURER. RAILS TO BE GLUED TO END/CENTER POSTS FOLLOWING MANUFACTURE'S INSTRUCTIONS.

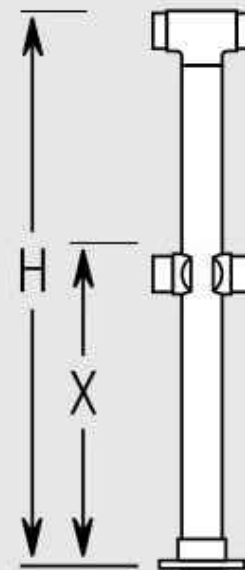
NOTE: ALL MATERIAL USED IN ALL COMPONENTS MUST BE ANTI-CORROSIVE.



Center Post

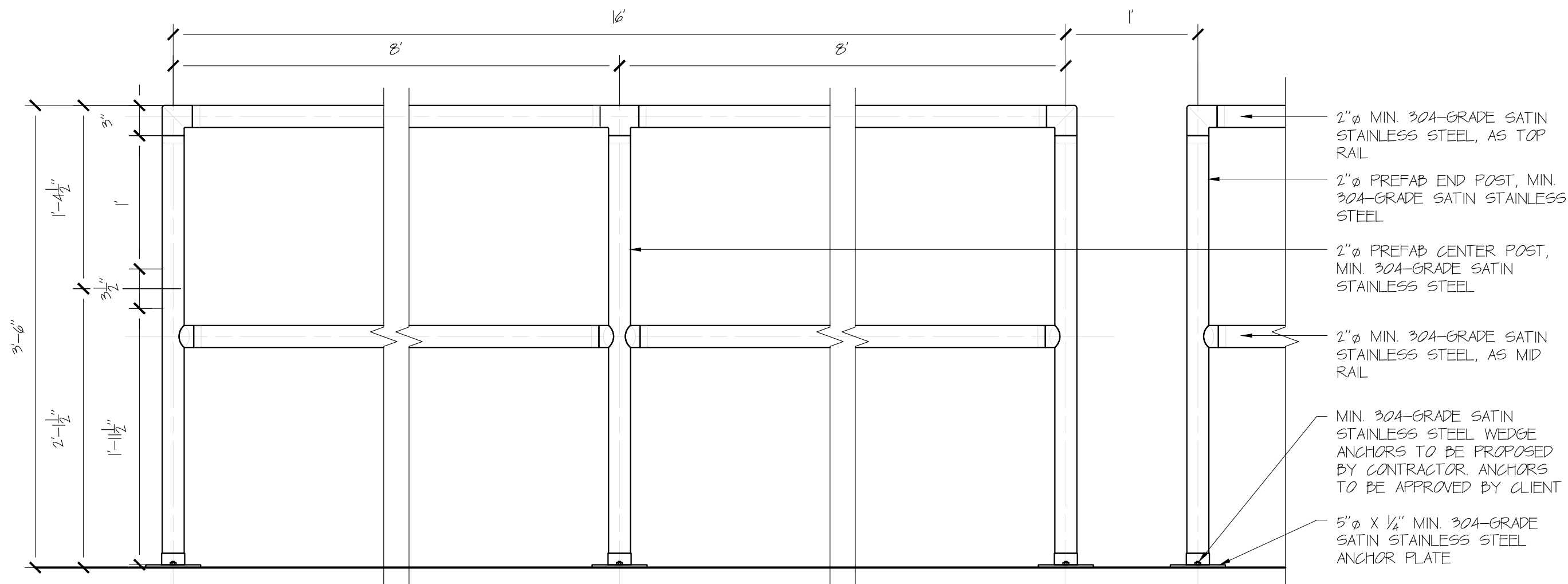


X Height:
36" Post = 19"
42" Post = 22"



Item#	Tubing	Height
D134/3	1 1/2"	36"
D234/3	2"	36"
D234/4	2"	42"

NOTE: PREFAB HANDRAIL COMPONENTS SOURCED FROM LAVI INDUSTRIES OR APPROVED EQUIVALENT



NO.	DESCRIPTION	DATE
NO.	REVISIONS	DATE

PEDESTRIAN SAFETY BUS LAYDOWN & SUMMER CAMP NEW HANDRAIL

REVIEWED BY
MANAGER: GREGORY CLARKSON
DATE:
CURATOR:
DATE:
APPROVED BY
COO:
DATE:

HANDRAIL DETAIL 16FT SEGMENT @ TTC -LAYDOWN AREA- PREFAB HANDRAIL

1 16FT SEGMENT - PLAN VIEW & ELEVATION
SCALE: 1:10

42" HEIGHT, PREFAB POST - RAILS GLUED								
HANDRAIL SECTION	LENGTH	16' SEGMENT	QTY END POST (2 PER SEGMENT)	QTY CENTER POST (1 PER SEGMENT)	QTY OF PLATES (1 PER POST)	QTY OF ANCHORS (4 PER PLATE)	QTY OF RAILS (4) 8' PER SEG.	SLEEVES (3) 2' PER SEG.
HANDRAIL SECTION 2	104.5'	6	12	6	18	72	24	N/A

PROJECT #:	
DRAWN BY:	MR
CHECKED BY:	
DATE:	2022-04-20
SCALE:	1:10
DRAWING #:	A1.06

NO.	DESCRIPTION	DATE
1	FOR ADDENDUM 1	2022.04.20

NO.	REVISIONS	DATE
-----	-----------	------

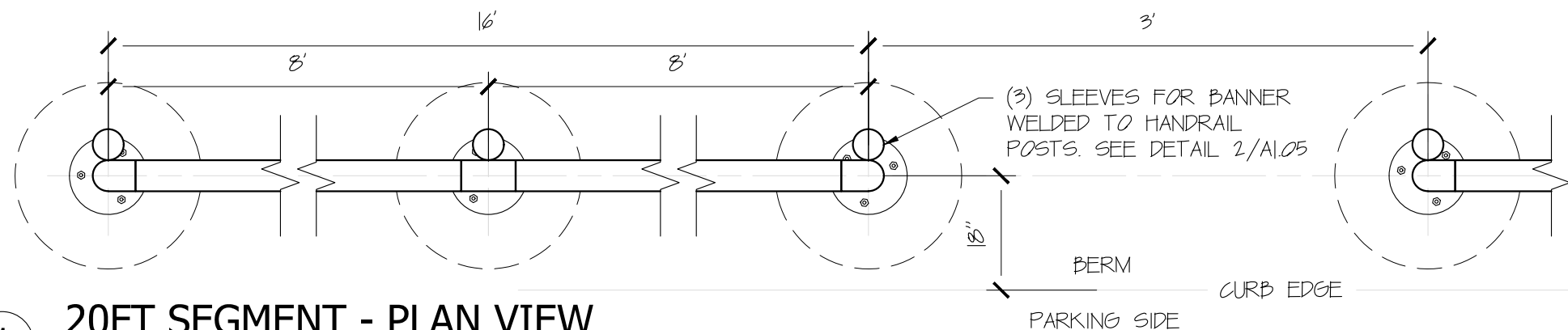
**PEDESTRIAN SAFETY
BUS LAYDOWN
& SUMMER CAMP
NEW HANDRAIL**

REVIEWED BY
MANAGER: GREGORY CLARKSON
DATE:
CURATOR:
DATE:
APPROVED BY
COO:
DATE:

**HANDRAIL DETAIL
16FT SEGMENT
@ SUMMER CAMP AREA
PREFAB HANDRAIL**

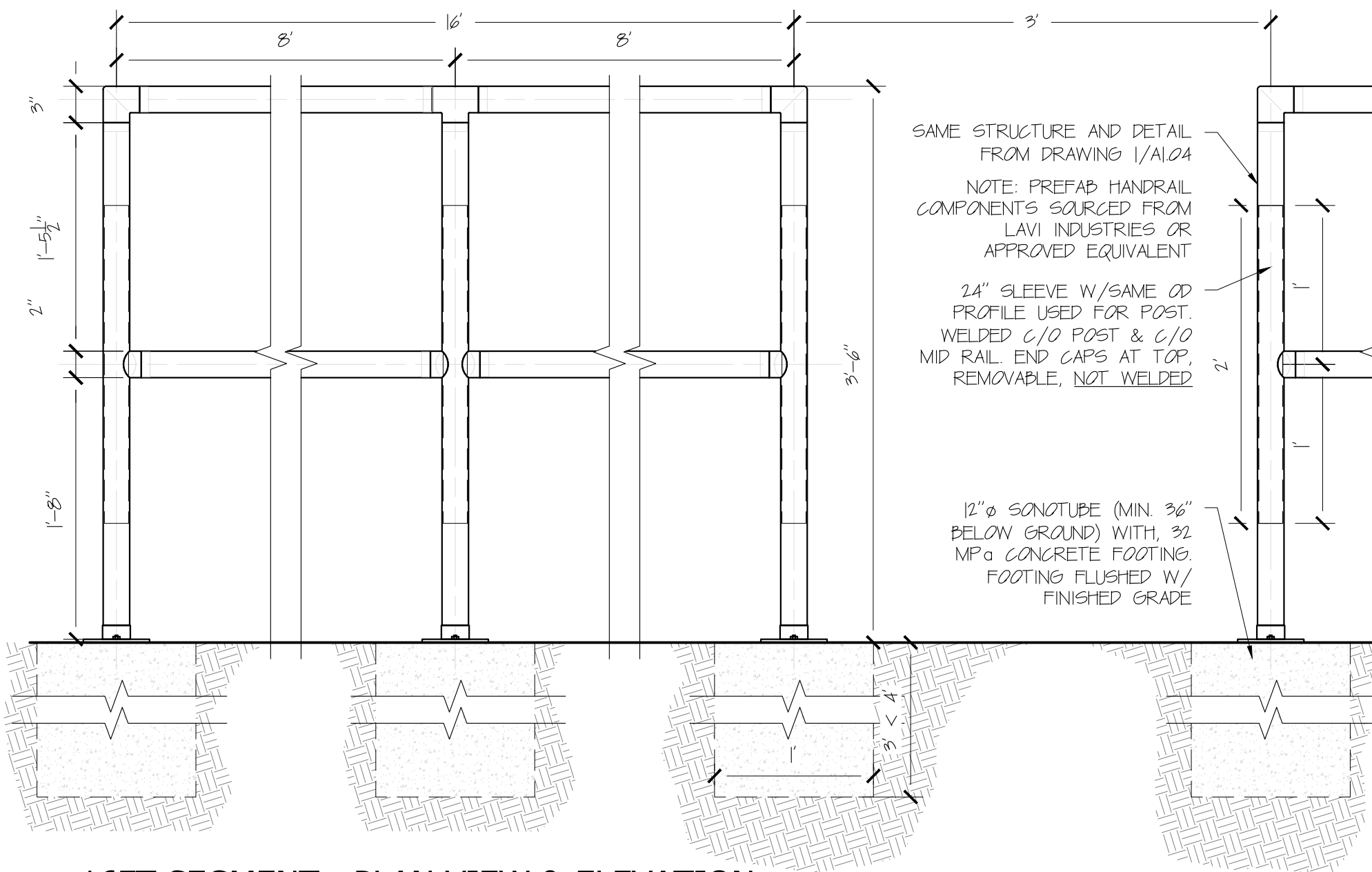
PROJECT #:
DRAWN BY: MR
CHECKED BY:
DATE: 2022-04-20
SCALE: 1:10

DRAWING #:
A1.07



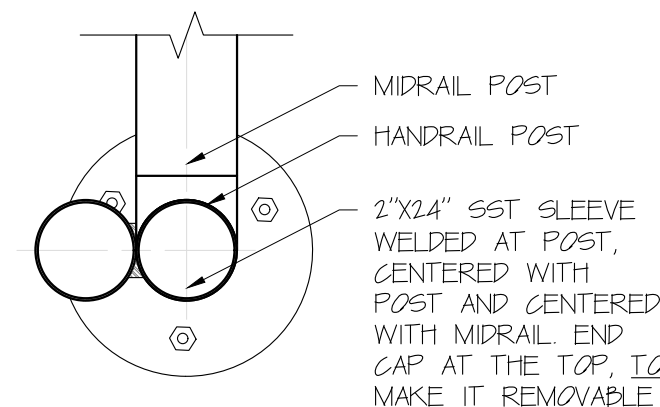
20FT SEGMENT - PLAN VIEW

SCALE: 1:10



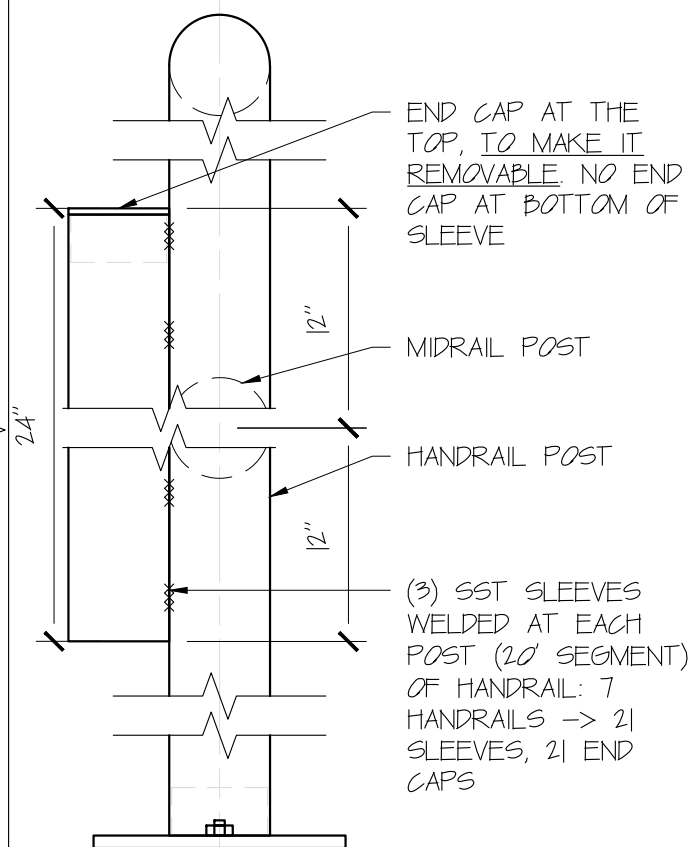
16FT SEGMENT - PLAN VIEW & ELEVATION

SCALE: 1:10



2 SLEEVE DETAIL

SCALE: NTS



42" HEIGHT, PREFAB POST - RAILS GLUED

HANDRAIL SECTION	LENGTH	16' SEGMENT	QTY END POST (2 PER SEGMENT)	QTY CENTER POST (1 PER SEGMENT)	QTY OF PLATES (1 PER POST)	QTY OF ANCHORS (4 PER PLATE)	QTY OF RAILS (4) 8' PER SEG.	SLEEVES (3) 2' PER SEG.
HANDRAIL S CAMP	17325'	9	18	9	27	108	36	27